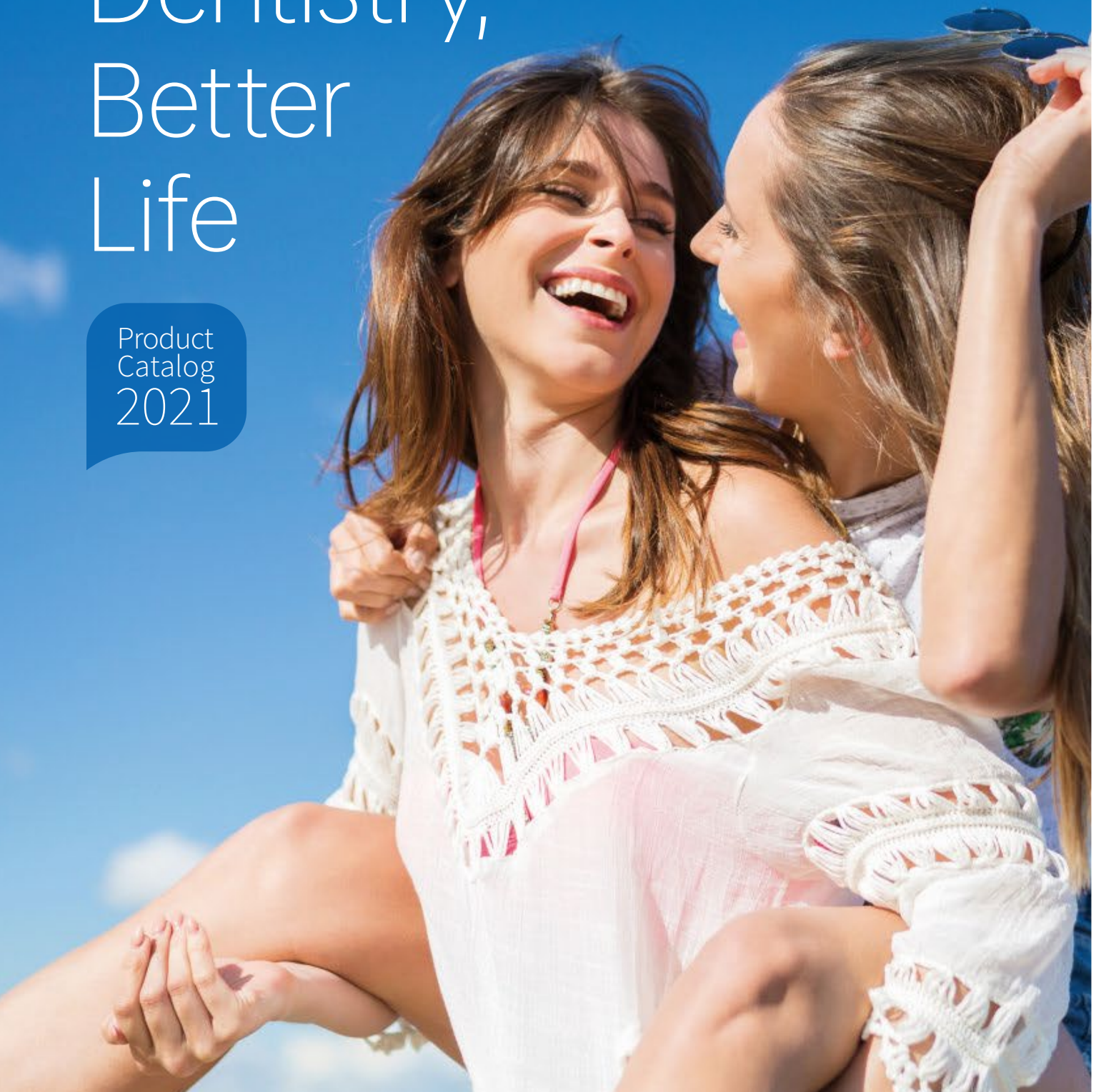


Better Dentistry, Better Life

Product
Catalog
2021



Contents

- 02 ENDO
- 10 ORTHO
- 16 ENDO DEVICES
- 28 LOUPES
- 32 MICROSCOPE
- 40 CBCT
- 48 DENTAL CHAIR
- 58 DENTAL CYCLE
- 62 IMPLANT
- 66 ACADEMY

www.bondent.com



1 UDG
Endodontics & Orthodontics
P.02~15

2 Bomedent / Wismy
Endo Devices
P.16~27



3 Semorr
Microscope
P.32~39



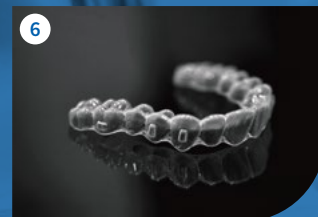
4 Bondent
CBCT
P.40~47

5 Bondent
Dental Chair
P.48~57



6 Dr.Clear Aligner
Dental Cycle
P.58~61

7 iEZ
Dental Implant System
P.62~65



Bondent Group is a platform that provides "integrated services" for dental medical institutions. From the education and training of doctors, the introduction of foreign cutting-edge technology, to domestic independent research and development and manufacturing, the company is committed to creating a new and healthy dental medical ecosystem through industry + Internet, improving world's dental medical technology and industry level, and helping dentists succeed.

🕒 It has 8 subsidiaries, 15 offices and more than 1000 employees. Be tolerant to diversity, tolerance is a virtue. Bondent an open and resource-converging platform, has won a good reputation in the industry with its business philosophy of "inclusive of all rivers, compatibility and inclusiveness".

Today, Bondent's product portfolio also consist of dental equipment: Semorr Microscope, CBCT & Dental unit , consumables such as UDG Endo File, iEZ implants and surgical guide as well as Dr. Clear Invisible Aligner.



Introduction

United Dental Group is located in Changzhou, Jiangsu Province, both in the east of China with convenient traffic. United Dental Group is a dedicated manufacturer on orthodontics and endodontics with wide product lines: brackets, archwires, molar bands, buccal tubes, endo rotaryfiles, mini implants, etc. All products have CE, FDA and ISO approved.

Our patent products-M3 series rotary files, have gained high praise from clinics', hospitals', universities' users, and more and more people will benefit from the products. We are looking for more dealers who would like to share high quality products and service with more doctors and patients.

For Endodontic Products, it covers rotary root canal files, obturation instruments and endo accessories.



New Revolution for Nitri File.



Endodontics

📌 For Endodontic Products, it covers rotary root canal files, obturation instruments and endo accessories.



Preparation

NiTi Rotary series

Platinum V.EU



Cross Section

Platinum V.EU is **Designed by European KOLs**:
 - Adapted S cross section with specific side-cutting to ensure effective debris removal and strongly reduce screw-in effect.
 - Innovative polishing and nano coating technology strengthen cyclic fatigue resistance of the file and lower the risk of file breakage.
 - New heat treatment to increase flexibility without compromising cutting efficiency.

Available in 21mm, 25mm and 31mm length.
Certification: Class IIa, CE, ISO

M3-Pro GOLD (CM-wire Niti)



Cross Section

V.1 V.2 V.3

Gold CM Alloy, non-cutting tip and sharp cutting edge assure its excellent resistance and flexibility at the same time. M3 pro Gold has various models for different usage habits: V.1 is the previous classic, V.2 is the previous version 2017, V.3 is the previous version 2018. e.g. V.3 starts with the opener 17/12 till 1/3 of root canal, 12/02vt, 16/02vt and 18/05 can create the Glide Path for all kinds of root canals safely, even seriously curved cases, 25/06 and 35/04 can finish the preparation properly and clean the apical part deeply.

Available in 21mm, 25mm and 31mm length.
Certification: Class IIa, CE, ISO

M3-L PLATINUM (M-wire Niti)

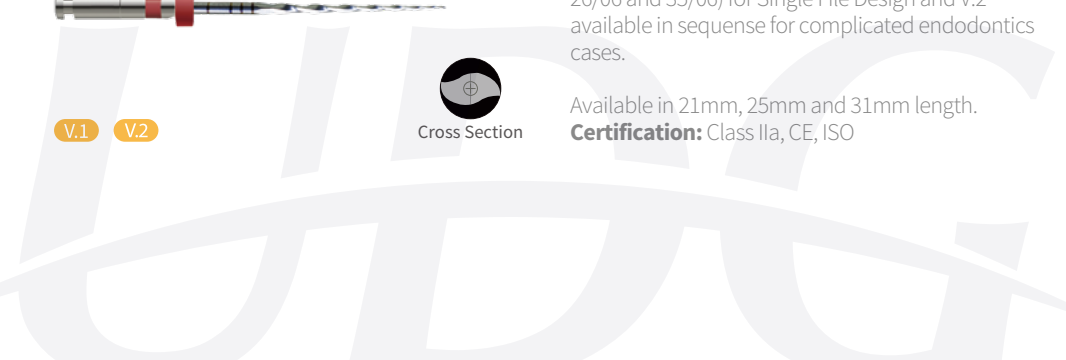


Cross Section

V.1 V.2

M-Wire Alloy, non-cutting tip, sharp cutting edge and the unique patented flat side assure the endodontics treatment more efficiently and smoothly. M3-L Platinum files come in various models: V.1 (20/07, 26/06 and 35/06) for Single File Design and V.2 available in sequence for complicated endodontics cases.

Available in 21mm, 25mm and 31mm length.
Certification: Class IIa, CE, ISO





Preparation

NiTi Rotary Series

Thanks to the ingenious static grinding technology, all CC series have a premium surface treatment with unique polishing procedure on the working part making the file more flexible without compromising cutting efficiencies. CC series come in various models:

CC • Premium V.EU



Cross Section

CC Premium V.EU is **Designed by European KOLs**:

This sequence is safe and easy to learn:

- With 17/12 it is easy to find the root canal entrances and scout to 1/3 of root canal safely
- 15/04 finish the glide path process smoothly with one instrument,
- Respect the natural canal anatomy: either 25/06 or 25/04 for Minimally Invasive choice
- 30/04 can clean the Apical part more comprehensively

Available in 21mm, 25mm and 31mm length.

Certification: Class IIa, CE, ISO

CC • Premium



(CC-4)



Cross Section

CC Premium is the previous CC4:

- Designed in sequence for complicated endodontics cases.
- 17/12vt, 20/04, 25/06, 35/04 and 3D Max.
- Classic S cross section helps in continuous removal of dentine debris and minimizes the radial contact with its non-cutting tip design.

Available in 21mm, 25mm and 31mm length.

Certification: Class IIa, CE, ISO

NiTi Reciprocation Series

CC • One PLUS



Cross Section

- Single File Design (20/07vt, 25/08vt, 30/08vt and 40/06vt)
- Patented Side Cutting
- Gold Nano Coating
- Works both in rotary motion and CW reciprocation motion.

Available in 21mm, 25mm and 31mm length.

Certification: Class IIa, CE, ISO

CC • One BLUE



Cross Section

- Designed for CCW reciprocation motion.
- Single File Design (20/07vt, 25/08vt, 30/08vt and 40/06vt)
- Blue Nano Coating on M-Wire Alloy

Available in 21mm, 25mm and 31mm length.

Certification: Class IIa, CE, ISO

NiTi Special Function Series

M3 • Immature BLUE



Cross Section

Designed by European KOLs for deciduous teeth and the patients with small mouth opening. Available in ISO 20, 25, 30, 35, 40, 45 both in Tape 04 and 06. CM Alloy with blue nano coating.

Available in 21mm, 25mm and 31mm length.

Certification: Class IIa, CE, ISO



Preparation

M3 · RT



Cross Section

M3.RT is the retreatment system
 - Efficient Cutting Tip.
 - Remove Gutta Percha out of root canal by stepwise sections.
 - Continuous Rotation.

Available in 21mm, 25mm and 31mm length.
Certification: Class IIa, CE, ISO

M3 · Opener



Cross Section

Designed with revolutionary M-wire technology, M3 Opener File can get into the entry of root canal and enlarge the coronal area easily.

Available in 21mm, 25mm and 31mm length.
Certification: Class IIa, CE, ISO

M3 · Safe Opener



Cross Section

M3 Safe Opener is applied with the UDG unique flat-side design. It reduces the screw-in effect and make it safer than ever when enlarging the coronal part. High cutting efficiency and stronger debris removal are maintained at the same time.

Available in 21mm, 25mm and 31mm length.
Certification: Class IIa, CE, ISO

M3 · Path



Cross Section

The M3 Path File optimizes the shaping preparation, respects the natural shape of the canal, increases patient safety with enhanced flexibility and resistance to cyclic fatigue. It preserves cutting efficiency, reduces breakage.

Available in 21mm, 25mm and 31mm length.
Certification: Class IIa, CE, ISO

M3 · Safe Path

(M-wire Niti)



Cross Section

M3 Safe Path File has various models: #10vt, 13vt and 16vt. It has a mirror-level shank and these instruments are marked with ISO colour of instrument tip size for easy identification. It increases debris removal and also reduces the screw-in effects.

Available in 21mm, 25mm and 31mm length.
Certification: Class IIa, CE, ISO

M3 · T

(M-wire Niti)



Cross Section

M3 T Files use pre-bent technology along with high-tech NiTi material for efficient and safer preparation with taper marking which shortens dentists time. Special designed for handling the difficult ledge during retreatment.

Available in various models: 10/04, 10/06, 15/04, 15/06, 20/07, 25/08 and 30/09.
Certification: Class IIa, CE, ISO

M3 · TP

(Niti)



Cross Section

M3 TP files are designed for the apical enlargement and clean the apical area.

Available in various models: 30/02, 35/02, 40/02, 50/02, 60/02
Certification: Class IIa, CE, ISO



Preparation

SST files

Stainless Steel **C** Files



Cross Section

UDG C Files are especially designed to create manual glide path and check the patency during rotary and reciprocation endodontics treatment. It has an inactive stiff pilot tip which helps in conducting the instrument safely along the canal. Perfect radiopaque silicon stopper and X-ray visible calibration rings. Available in ISO 06, 08, 10, 12.5 and 15 and in 19mm, 21mm and 25mm lengths.

Certification: Medical Class I, EC Declaration of Conformity

Stainless Steel **K** Files



Cross Section

UDG K File is the stainless steel hand instrument with radiopaque silicon stopper and X-ray visible calibration rings. It has an inactive pilot tip which helps in conducting the instrument safely along the canal till working length. It comes in different sizes varying from #6, #8, #10, #15-#40, #45-80 and available in 21mm, 25mm, 28mm and 31mm length.

Certification: Medical Class I, EC Declaration of Conformity

Stainless Steel **H** Files



Cross Section

UDG H File is the stainless steel hand instrument with radiopaque silicon stopper and X-ray visible calibration rings. It has an inactive pilot tip with strong cutting edge. It comes in different sizes varying from #6, #8, #10, #15-#40, #45-80 and available in 21mm, 25mm, 28mm and 31mm length.

Certification: Medical Class I, EC Declaration of Conformity

Stainless Steel Reamers



Cross Section

UDG Reamer is the stainless steel hand instrument with radiopaque silicon stopper and X-ray visible calibration rings. It has an inactive pilot tip and flexible triangle cross section. It comes in different sizes varying from #6, #8, #10, #15-#40, #45-80 and available in 21mm, 25mm, 28mm and 31mm length.

Certification: Medical Class I, EC Declaration of Conformity

Irrigation



Irrigation

Irrigation Needle



Irrigation needle has a bendable double port side with closed end which eliminates hydraulic pressure to apex and ensures excellent irrigation. It comes in two sizes: 22MM used for posterior teeth and 26MM used for anterior teeth.

Certification: Medical Class I, EC Declaration of Conformity

Actor I pro



Actor I pro provides the ultrasonic energy required to effectively produce cavitation resulting in significantly better cleaning of root canal in endodontic treatment. Features: Full automatic control of microchip with 2 optional vibration amplitudes, Cordless easy-to-use ultrasonic activation, LED light for improved visualization.



Obturation

Gutta Percha Points

Bio Ceramic Gutta Percha Points



Bio Ceramic Gutta Percha Points are faster and effective and are used for quick obturation after root canal preparation with high quality bio ceramic material. These are true to size and excellent in workability with non-distorted crimp. It comes in three colours and shapes: RED Shape: Large tapered 0.06 Taper, PINK Shape: Large tapered 0.04 taper, WHITE Shape: ISO Standard 0.02 Taper.

Certification: Class IIa, CE Under Process

Standard Gutta Percha Points



Standard Gutta Percha Points are faster and effective and are used for quick obturation after root canal preparation. These are true to size and excellent in workability with non-distorted crimp. It comes in three colours and shapes with specifications 2%, 4% and 6%.

RED Shape: Large tapered 0.06 Taper, PINK Shape: Large tapered 0.04 taper, WHITE Shape: ISO Standard 0.02 Taper.

Certification: Class IIa, CE, ISO

Paper Points



Paper Points are used for root canal filling and comes in three colours, shapes with specifications 2%, 4% and 6%.

RED Shape: Large tapered 0.06 Taper, PINK Shape: Large tapered 0.04 taper, WHITE Shape: ISO Standard 0.02 Taper. These points ensures long shelf life along with freshness to give flexible workability.

Certification: Class IIa, CE, ISO

Gutta Percha Point Trimmer



Gutta Percha Point Trimmer is a high production design which can effectively ensure the dressing accuracy of gutta percha, making filling easier and more rigorous. The size of the trimmed gutta-percha is 20, 25, 30, 35, 40, 45, 50, 55, 60, 70. It is made up of aluminium alloy which adopts dial design used for cutting gutta percha.

Certification: Medical Class I, EC Declaration of Conformity

Plugger



Plugger comes in two sizes small and big. It's small tip is made up of niti alloy and it's big tip is made up of stainless steel.

Certification: Medical Class I, EC Declaration of Conformity

Accessories

Micro Opener



Micro -Openers are specially designed for microscopic treatment, for orifice opener of posterior teeth. It builds up a smooth, flexible path to posterior teeth which improves treatment performance. It is available in different length and models: 21mm, 25mm and 31mm and #10, #15 and #20 respectively.

Certification: Medical Class I, EC Declaration of Conformity

Micro Shaper



Micro-Shapers are specially designed for microscopic treatment, for negotiation of posterior teeth. It builds up a smooth, flexible path to posterior teeth which improves treatment performance. It is available in different length and models: 21mm, 25mm and 31mm and #20, #25 and #30 respectively.

Certification: Medical Class I, EC Declaration of Conformity

Paste Carrier



Paste Carriers are used for distribution of obturation paste and sealing cement into canal and down to the apex or for the application of calcium hydroxide as a temporary medication. Different shades paste fillers are available: Lentulo paste filler and spring paste filler.

Certification: Medical Class I, EC Declaration of Conformity

Peeso Reamer



Peeso reamer is used for enlarging cervical portion of the canal and to prepare the canal entrance. These instruments are also useful in removing gutta percha in preparation for creating post space. These are available in standard (32mm) and short (28mm) lengths.

Certification: Medical Class I, EC Declaration of Conformity

Hand Files Holder



Hand Files Holder comes in blue colour and made up of medical grade stainless steel. It comes with a period of validity of 3 years and it has to be sterilized after each use.

Certification: Medical Class I, EC Declaration of Conformity

Latex Dental Dam



- Latex Dental Dam comes in 3 categories: "Fine, Medium and Heavy" based on its thickness.
- Depending upon scent, Mint and Unscent are available.
- Latex Dental Dam comes in two sizes respectively: 5"*5" - 127MM* 127MM and 6"*6" - 152 MM* 152MM.

Certification: Medical Class I, EC Declaration of Conformity

Endo Clean Box



Endo clean box are one of the autoclavable endo accessories and are made up of TPX Plastic material.

Certification: Medical Class I, EC Declaration of Conformity

Endo Box



Endo Organizer box are of the endo accessories are used for organizing hand files and are made up of TPX Plastic material.

Certification: Medical Class I, EC Declaration of Conformity

Measure Ruler



Measure ruler is one of the autoclavable endo accessories and is used for length measurement.

Certification: Medical Class I, EC Declaration of Conformity

Training Block



Training Blocks are one of the endo accessories are made up of resin material.

Certification: Medical Class I, EC Declaration of Conformity

Endo Training Tooth



3D printed plastic tooth for endodontic training. Replica of a natural maxillary first molar with MB2.

Certification: Medical Class I, EC Declaration of Conformity

Stopper



Stoppers are one of the endo accessories are made of silicon material.

Certification: Medical Class I, EC Declaration of Conformity

Training Kit



Training Kits are available for workshops.

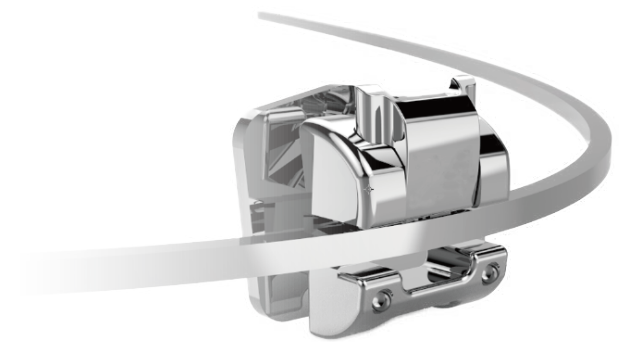


Smiles
with
beauty.



Orthodontics

👉 For Orthodontic Products, it covers brackets, arch-wires, molar bands, buccal tubes, mini implants, etc.



Metal Brackets

Omni SL 6th Generation



Omni SL brackets are from Uni clip series are made up of stainless steel. These brackets are highly flexible as these are round in shape with low profile design and easy wire engagement. It has got laser mark on pad for easy identification and provides great comfort during aligning treatment which helps in keeping the better oral health. It has got following specifications: ROTH/MBT, 0.022/0.018, NO HOOK/3/HOOK/345/HOOKS.

Omni MIM



MIM produced brackets with welding 80 ped used to provide superior finishing. These brackets bring technology, innovation and value together. It comes in two forms: Omni-MM series Mini and Omni-MM series Standard.

Ceramic Brackets

Uni-Trans



Uni-Trans brackets enhances patient comfort by giving more smooth surface and by minimizing occlusal interference. It is a perfect combination between aesthetics design and 3D printing technology. It provides more efficient treatment by relying on extra-low friction and non-metallic slides. It has got following specifications: ROTH/MBT, 0.022/0.018, NO HOOK/3/HOOK/345/HOOKS.

Uni-Clear Pro



Uni-Clear pro are mono-crystallion ceramic brackets used for clear transparent appearances.

Clear Max Pro



Clear Max Pro brackets enhances patient comfort by giving more smooth surface and by minimizing occlusal interference. It is a perfect combination between best aesthetics design and 3D printing technology. It provides more efficient treatment by relying on extra-low friction and non-metallic slides. It has got following specifications: ROTH/MBT, 0.022/0.018, NO HOOK/3/HOOK/345/HOOKS.

Elastomers

Power Chain



Power chains are color-fast and stain resistant in nature. These are medical grade polyurethane which offers a consistent force in closed, short, long filaments and it are color matched with ligatures.

Ligature Ties



Ligature ties building colors are color-fast and stain resistant in nature. These are medical grade polyurethane which ensures practice.

O-rings



Intraoral elastics are made up of unique design from the purest, freshest materials . It comes in an excellent package and provides excellent stretch and rebound. These are latex free and stain resistant. It has got following specifications: 2.5 OZ/3.5OZ/6.5 OZ, 1/8/3/16/5/16/3/8, Light/Medium/Heavy.

Separators



Separators modules stay put until they are removed with an instrument providing excellent stretch and rebound. These are soft-moulded modules which will not irritate soft tissues.

Arch Wires

Stainless Steel Archwires



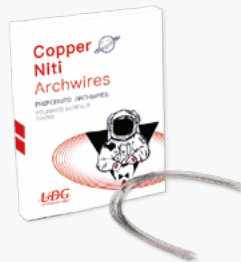
Stainless Steel archwires are made up of 304 stainless steel material. These wires provides a smooth surface along with greater comfort and excellent elasticity. It has got following specifications: Ovoid/Natural, 0.012-.021* .025, upper/Lower, 1pc/pack, 10pcs/pack.

Niti Super Elastic



Super Elastic archwires are light to moderate and responsive to chilling. These wires address leveling, torque and rotation early in treatment. It is highly flexible with excellent resiliency which provides greater comfort to patients more than stainless steel wires. It has got following specifications: Ovoid/Natural and Reverse back.

Aesthetic NITI



Aesthetic NITI archwires are made up of niti material and are preformed archwires with polished surface finish.

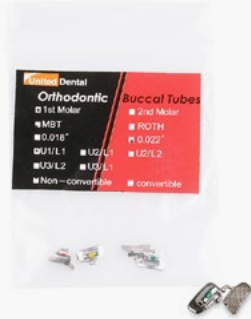
Reverse Back Archwires



Reverse back archwires are of three types: RCS1, RCS2 and RCS3. It provides 20 degree anterior torque. It also helps in early introduction of torque in upper centrals and laterals.

Bands & Tubes

Orthodontic Molar Band Assorted Kit



Orthodontic Molar Band assorted kit has an ideal shape which provides greater elasticity along with superior fit. It is built into buccal tubes with straight interproximal walls in order to reduce separation along with curved festooned. It has got following specifications: #29-#44+, UR/UL/LR/LL, 1st/2nd molar.

Buccal Tubes



Buccal tubes are from the falcon series which takes the advantage of the shock absorbcy with its innovation design. It makes bonding easy and more reliable. It has got following specifications: 1st/2nd molar, Roth/MBT, Bondable/Weldable, convertible/non-convertible, Roth/MBT, U1/L1, U2/L1, U3/L2.

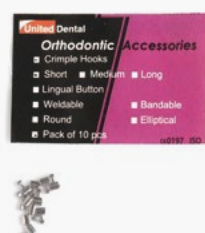
Accessories

Springs



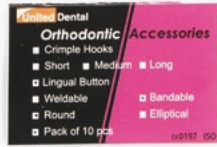
Springs offer the same shape memory benefits of super-elastic springs with the added benefit of reduced inventories. It provides adjustable force with its open and closed coil titanium springs. It has got following specifications: Closed springs: 6mm, 9mm, 12mm, 0.10 inch/0.12inch. Open springs: 178mm, 0.10 inch/0.12inch.

Crimple Hooks



Crimple hooks are made up of stainless steel and can be placed anywhere on the wire for the extra retention hook. These are easy to slide and snap. It comes in two forms: short and long.

Lingual Buttons



Lingual buttons are made up of 304 stainless steel material and provides smooth surface, greater comfort and excellent bonding. In the areas of high density, it may be necessary to utilize the 1.1mm drill provided to penetrate the cortical plate. It has got following specifications: Round base/Ellipse base, Bondable/weldable.

Micro Implants



UD's Unique design for micro implant is self-drilling and self-tapping. Due to the design of the conical thread, drilling is eliminated in most of the areas of mouth. It has got following specifications:- 6mm, 7mm, 8mm, 9mm, 10mm, 11mm and 12mm.

Micro Implants Handles



Micro-Implant handles are used to hold micro-implants. It comes with matching handle: MIHI-001 and a handle shack: MIHIS-001.



Introduction

Changzhou Bomedent Medical Technology Co. Ltd is a high-tech enterprise who focus on researching, developing, selling and service dental instruments.

Our main products are endodontics micromotor; apex locator and related products. We will work closely with purpose to establish a new domestic oral medical environment. research and develop, produce, sales high-end oral medical equipment. we own a R & D team who has more than ten years experience in the development of dental products. Our team will take the technology as the core, depend on the quality as life, keep continuous innovation, dedicate to provide the highest cost-effective products and good after service.

We have 4 broad ranges of products under Bomedent: Endo-motor, Apex Locator, Obturation & Ultrasonic Irrigation System.



ENDO-MOTOR & APEX LOCATOR

Bomedent Endo-motor & Apex Locator

🕒 A high-tech enterprise who focus on researching. Developing, selling and service dental instruments.

Our range of products are:

- iRoot Apex: Apex Locator.
- Marc III: Cordless Endo Motor.
- iRoot Pro: Endo Motor + Apex Locator.



iRoot Apex

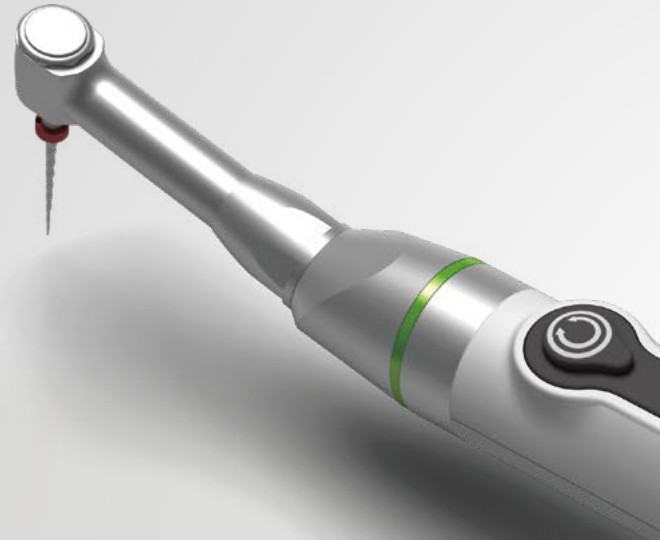


Marc III



iRoot Pro

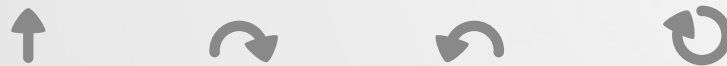
iRoot Apex
Smart precise Apex Locator



Easy Start



 Integrated Bluetooth

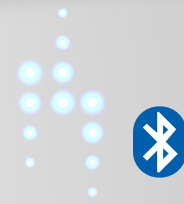
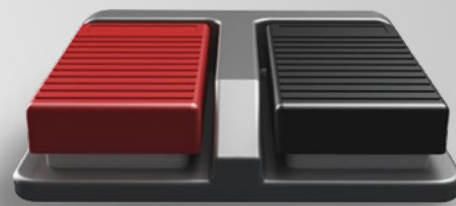


Equipped with high precision gyroscope, switch the display mode according to the state of display.



iRoot Pro
Cordless Endo Motor
with integrated Apex Locator

iPedal



Marc III
Cordless Endo Motor



Marc III can work together with iRoot Apex by cable.

ENDO

ORTHO

ENDO DEVICES

LOUPES

MICROSCOPE

CBCT

DENTAL CHAIR

DENTAL CYCLE

IMPLANT

ACADEMY

WISMY



WISMY

Endo-motor & Apex Locator

🕒 A high-tech enterprise who focus on researching. Developing, selling and service dental instruments.

Our range of products are:

Endo Wise: Cordless Endo Motor.

Endo-Wise Plus: Cordless Endo Motor + Apex Locator.

Wisplex: Apex Locator



Apex Locator

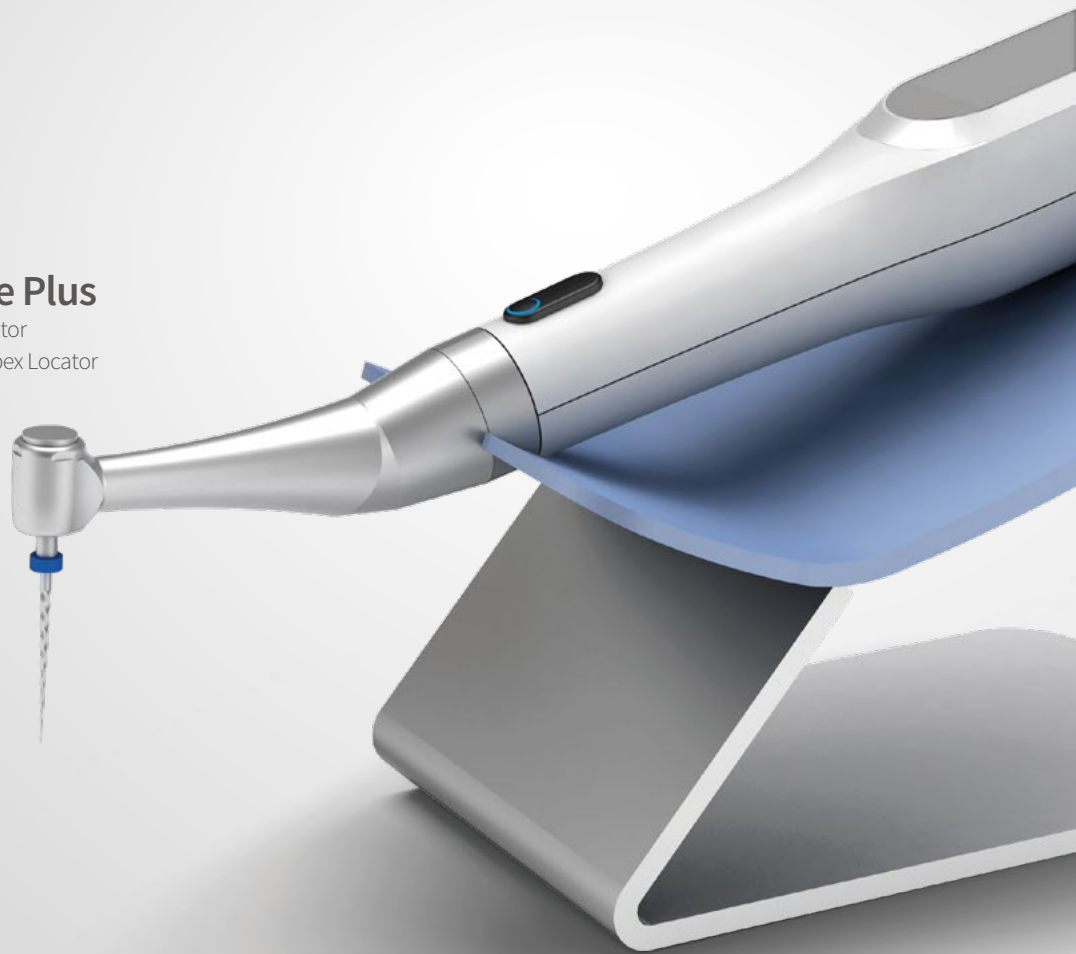
Endo wise



Endo wise Plus



Endo Wise Plus
Cordless Endo Motor
with integrated Apex Locator



Wisplex
Apex Locator



Four Working Modes

- | | | | |
|-------------------------------------|------------------------------|-------------------------|---------------|
| 1 | 2 | 3 | 4 |
| APEX
LOCATOR
CONTROL
MOTOR | MOTOR
APEX
INDEPENDENT | ONLY
APEX
LOCATOR | ONLY
MOTOR |

Accurate. Sensitive.

- High definition TFT Screen.
- Multi frequency measurement technology guaranties high accuracy.
- Multi color regions.
- Segmented display of the file in root canal.
- Working length adjustable.
- Multi frequency measurement technology.
- Not affected by the blood or pulp in the root canal.
- Not affected by tooth types.



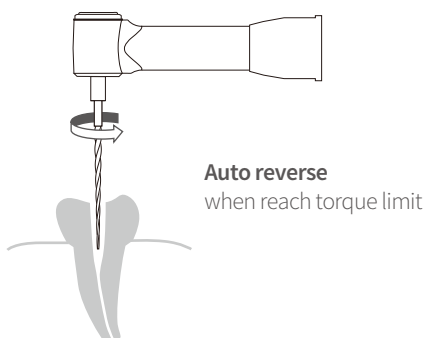
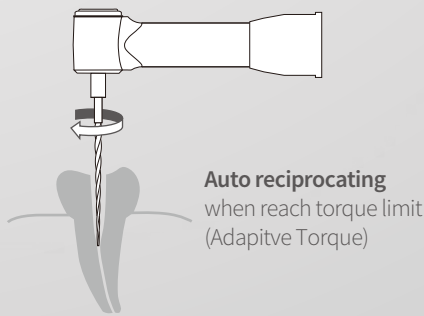
Type	Portable / Cordless
Memory	10 Memory Setting
Rotation	Clockwise / Anti-Clockwise / Reciprocating
Reciprocating	Rotation Angle Adjustable
Apeed / Torque	800 Prm Max / 4.0N.cm Max
Battery	Rechargeable / Replaceable
Charging	Micro USB
Display	OLED
Available Contra Angle	16:1
Apex Locator Control Motor Working Mode / Torque Control	Auto Start in the Root Canal Auto Reverse when Reaching Apical Foramen Auto Reverse when Exceeding the Torque Limit Value



Endo Wise
Cordless Endo Motor

Features

1. Multiple reciprocating
2. Large OLED Screen, Long working time
3. Accurate torque control



ULTRASONIC ENDO ACTIVATION DEVICE



Actor I pro
Ultrasonic Endo Activation Device



Two working model
regular and high power options,
meet different situation requirement.



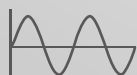
1600mAh
Longer standby time



Wireless charging
Faster and more convenient.



**Small amplitude
Strong Power**



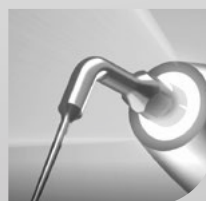
Mute ultrasonic technology.
Small amplitude but strong power
working more table and less noisy.



**Tips meet more root
cannel situation
requirement**
20/02-21mm x 3pcs, 25/02-18mm x 3pcs



Wireless control (optional)
Wireless foot control, reducing operation
difficulty of the dentist.



Front light
The LED light gives a better view
inside oral cavity.

Bomedent Obturation & Ultrasonic Irrigation System

🕒 A high-tech enterprise who focus on researching. Developing, selling and service dental instruments.



eFiller



eHeater

Our range of products are:

Actor I Pro: Ultrasonic Endo Activation Device.

eFiller: Obturation System Backfill.

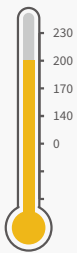
eHeater: Obturation System Down Pack.



OBTURATION SYSTEM BACKFILL



eFiller
Obturation System Backfill



Rapid heating 14s to Melt

It only takes 14 seconds to quickly melt the gutta percha. Reduce the warm-up waiting time.



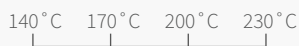
2600mAh
Longer standby time



Ergonomic design
balanced and comfortable hand feeling



Four working temperature
Wider temperature range, adapt to more gutta percha points on the market.



Four working tip
2 tips/23G2 tips/25G925 silver



OBTURATION SYSTEM DOWN PACK



eHeater
Obturation System Down Pack



Working continuously 4s
Work continuously for 4 seconds then stop heating, to avoid heating long time burning gums.



2600mAh
Longer standby time



0.2S to 200 °C
The temperature rises instantaneously in 0.2 seconds, no waiting, quick cuts.



Rotation tip
The needle can be rotated to adapt to multi-angle operation.



Wireless control (optional)
Wireless foot control, reducing operation difficulty of the dentist.



Front light
The LED light gives a better view inside oral cavity.

BONDENT LOUPES



Bondent Loupes

👉 **High-Quality Loupes by Bondent which provides super-wide field of view and extensive depth of field.**

Our focus products are:

Classic TTL1
Mini-Square TTL3
Galilean Flip-Up Loupes
Head Light HLP05



👉 **Classic TTL1**

Uniquely customized to your specification
Lightweight comfort
Wide and deep field of view

Specifications of TTL 1

Magnification	Working Distance	Field of View	Depth of Field	Weight
2.5x	Customized	110-150mm	115-180mm	51g
3.0x	Customized	90-130mm	70-165mm	51g
3.5x	Customized	70-120mm	65-175mm	51g

*Weight measured based on Standard E sport frame *Standard frame: Ni-alloy frame or E sport frame *Standard case: Fabric case B



↳ Mini - Square TTL3

Mini-square (TTL3) loupes can be produced according to your PD and your required working distance. It is comfortable experience with the lightest weight. The distinction of amtech TTL3 is micro-size and light weight that ensure you more comfort and optimum performance.

Specifications of TTL 3

Magnification	Working Distance	Field of View	Depth of Field	Weight
2.5x	Customized	110-150mm	115-180mm	51g
3.0x	Customized	90-130mm	70-165mm	51g
3.5x	Customized	70-120mm	65-175mm	51g

*Weight measured based on Standard E frame *Standard frame: Ni-alloy or E sport frame *Standard case: Metal case



↳ GL4 Synchronous Style

Galilean Flip-up loupes with 2.5x, 3.0x and 3.5x magnification, different working distance and LED illumination system are available. Multi-layer anti-reflection coating provides extremely high resolution. Anti-glare, anti-fog and scratch-resistance optic lens ensure long time no-trouble use without any problems.

Specifications of GL4

Magnification	Working Distance	Field of View	Depth of Field	Weight
2.5x	340-500mm	100-140mm	115-180mm	65g
3.0x	340-500mm	70-125mm	70-165mm	65g
3.5x	340-500mm	60-115mm	65-175mm	65g

*Weight measured based on Standard D sport frame *Standard frame: Ni-alloy frame or D sport frame *Standard case: Fabric case B

KL3 / KL4 Asynchronous Style

Higher magnification perfect for precise surgical operation. Quality prismatic optics provides a true edge to edge bright image.



Specifications of KL3 / KL4

Magnification	Working Distance	Field of View	Depth of Field	Weight
4.0x	340-500mm	60-750mm	80-130mm	67g
5.0x	340-500mm	55-65mm	70-120mm	67g

*Weight measured based on Standard D sport frame *Standard frame: Ni-alloy frame or D sport frame *Standard case: Fabric case A

Head Light HLP05

Headlight Specifications	
Weight	7.5g
Light Color Temp	6000K
Light Intensity	≥50,000 LUX
Power	1W LED
Composite Beam Filter, curing filter included	
Specification of Battery	
Type	3400 mAh, Lithium ion battery
Weight	92grams
Recharge Time	3-4 hours Input voltage: 110V-220V
Operation Time	9 hours



SEMORR

Introduction

SEMORR Medical Tech specializes in designing, manufacturing and promoting surgical microscope with HD imaging system in dentistry whether you are in endodontics, periodontics, or restorative dental profession, SEMORR offers microscope solutions ideal for your practice.

Since founded, SEMORR has been derived from its core values and stands for benefiting every procedure by helping practitioners to better diagnose and predictably treat their patients.

Our range of products are:

Naked Eye 3D
DOM 3000D-4K
DOM 3000 Series
TME Training Microscope
Accessories



SEE MORE
TREAT MORE

Semorr Surgical Microscope with HD Imaging System

👉 Enjoy a stress-free working space like never before.



👉 Semorr Naked Eye 3D Microscope

Naked eye 3D technology

- Human eye location and tracking system, stereo shock, visual experience

No eyepieces, easy to operate

- Reduce the threshold of microscope use

Super depth of field, zoom in again

- 4 times the traditional depth of field and magnification

Double screen and display operation system & doctor-patient communication modules

- Meet the needs of different scenarios

Adjuvant therapy inverted mirror system

- The image is turned to facilitate the surgeon to treat under the oral mirror reflection and make it easier to use

Compatible with multiple screens

- Support multi-screen configuration scheme, wireless connection

SEMORR

ENDO

ORTHO

ENDO DEVICES

LOUPES

MICROSCOPE

CBCT

DENTAL CHAIR

DENTAL CYCLE

IMPLANT

ACADEMY

SEE MORE TREAT MORE

📌 **DOM 3000D-4K**
Surgical Microscope

- Sleek and ergonomic designs
- Instant connection at your fingertips
- Image quality beyond expectations





1 Extended binocular tube with IPD adjustment Knob

Precise positioning of pupil distance. It offers dentists a convenient way to set the microscope to correct position and get focus easily. Extended tube helps dentist keep away from occupational disease.

2 Zoom magnifier knob

The continuous zoom enables operators to magnify and focus an object at various magnifications without interruption. Combined with 4K integrated camera, it offers operators ultimate freedom to capture digital images and record real time videos at multiple magnifications.

3 New objective lens Enjoy a stress-free working space like never before

F=180mm-460mm, Large focus range design. Get focus at different focal plane without moving the microscope. Improve the operator's ergonomics and patient's comfort.

4 Optimal ergonomic designs lead to simplicity

Say goodbye to bulky attachments like beam splitters, multiple cables, and add on cameras. The new Semorr microscope features an integrated design with a sleek appearance. Our built-in 4K camera and "knob-less" damping arm give the microscope a balanced performance, ensuring smoothness and dexterity of operation. It takes up less space and is easier to operate, which in turn will save more time for you and your patients.

5 Built in WIFI

The built-in WIFI can be paired up with devices like cellular phones and tablets, which can act as an additional screen as well as a platform for digital documentation. It allows clinicians easy access to capture and record what is seen during an examination pre-operatively, intra-operatively, and post-operatively, and to store it in the patient's chart.

6 4K camera

4K integrated camera can record full HD videos and HD images with 12 million pixels. The membrane switch on the handle makes a unique and the most ergonomic feature, in which the design enables operators to digitally documenting intra-operative/intra-oral images without interruption the treatment.

ENDO

ORTHO

ENDO DEVICES

LOUPES

MICROSCOPE

CBCT

DENTAL CHAIR

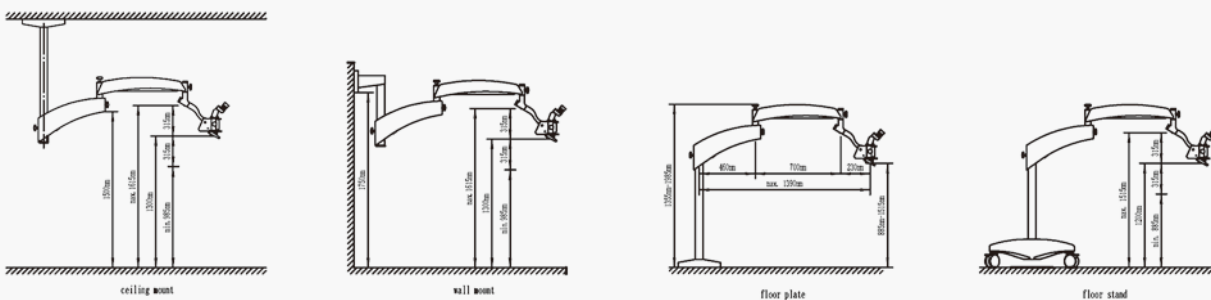
DENTAL CYCLE

IMPLANT

ACADEMY

DOM3000D-4K Technical Data

Microscope System	
Eyepieces	10X/22B (Aperture:18mm)
Binoculars	0~210° inclinable extended tube
PD adjustable range	55mm~75mm
Diopter Range	±7D
Magnifications	DOM3000D-4K: 3.6X~23.3X
Total magnification rate(*)	DOM3000D-4K: ZOOM
Objective Lens	WD180-460mm
Diameter of FOV(*)	DOM3000D-4K: 65 mm
Illumination System	
Light source	LED module, variable brightness, over 60,000h life span
Minimum illumination intensity (f=250)	>80,000IX
Diameter of illumination spot	85mm
Filter	Orange, Green
Color temperature	6500k close to natural light, true color
Support System	
Standard base	Mobile base (white/black)
Swing arm	Radius gyration: 460mm, 360° rotation
Microscope arm	Radius gyration:700mm, ±160° rotation, up & down ±315mm
Longest arm reach	1390mm
Dimension of base	730mm X 730mm or 516*516mm
Net weight	120kg
Electric System	
Input power	AC100-250V, 50/60Hz
Light source max consumption	20VA
Total consumption	70VA
Fuse	220V: T1.0AL 250V / 110V: T2.0AL 125V
Image System	
Video resolution	3840x2160 (4K, The effective number of pixels is 4 times that of 1080P)
Video frame rate	30fps@4K
Resolution of static image	4000x3000
Control Method	one-key video recording and camera parameter setting for wireless remote control, mobile phone, tablet computer, foot pedal, small buttons etc.
Storage media	TF card (maximum supporting 128G)
Working mode	Single shot, video, continuous shot, time-lapse shot
Additional features (optional)	Support the personalized Settings of camera parameters, RAW format photo storage; multi - point image transmission and receiving function



SEMORR

SEE MORE TREAT MORE

DOM 3000 Microscope

Surgical Microscope



Features

- Excellent optical system ensures an exquisite image in every detail
- Accurate zoom magnification system
- Stable and lifelong LED illumination
- Elegant and compact design
- Ergonomic binoculars (with 210° movement)
- Flexible balance system
- Accessible to future update to premium edition

ENDO

ORTHO

ENDO DEVICES

LOUPES

MICROSCOPE

CBCT

DENTAL CHAIR

DENTAL CYCLE

IMPLANT

ACADEMY

ERGONOMIC DESIGN EASE OF USE, COMFORT

Eye Cups

Fold or unfold it, use it to comfort your viewing.

Inclinable Binocular Tube

Semorr ergonomic binoculars (with 210° movement) provide a comfortable working position for surgeons. Pupil distance is adjustable as well for better viewing.

IPD adjustment knob

Precise positioning of pupil distance. It offers dentists a convenient way to set the microscope to correct position and get focus easily.

Magnification Changer

Accurate magnification positioning

Microscope Body

Smart outside, strong inside.

Objective with Fine Focus

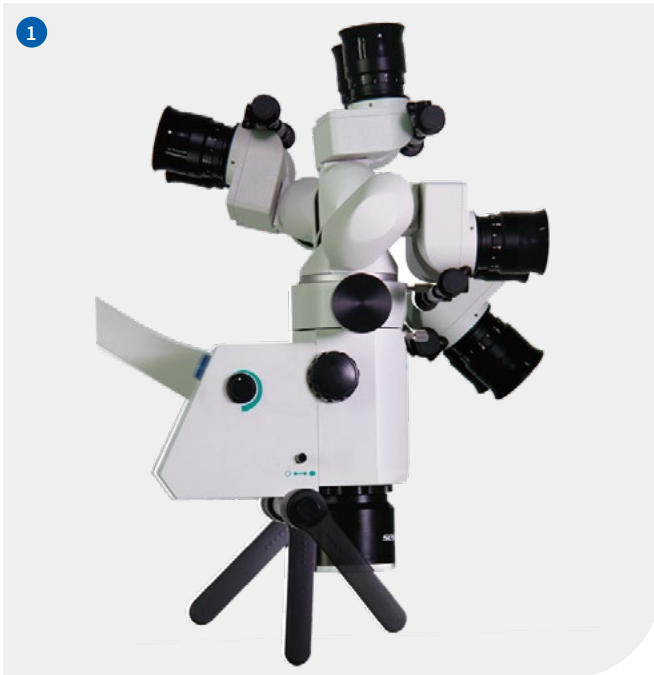
Focus distance 250mm (9.84") objective lens offers sufficient space for all kinds of microsurgery.

Manual fine focus(14mm) function makes it easier to obtain clear image in high magnification.

Rotatable Handles

360° variable rotation
Easy to be placed at any intended position and enables the surgeon to move the microscope head easily





1

1 Ergonomic Binocular Tube (210° movement)

Semorr knows every surgeon's comfortable working positions are different. For relieving the muscle fatigue of shoulder, neck and lower back during long time surgery and keep the surgeons away from occupational diseases, this wide range viewing angle binoculars are designed.

2 Flexible Balance System

Accurate balance mechanical structure guarantees the swing arm rotating flexibly and microscope arm moving up and down smoothly. Load-bearing weight is pre-calculated to maintain the smooth movement and accurate position of DOM300 when accessories are added.



2



3

3 360° Rotating Handle

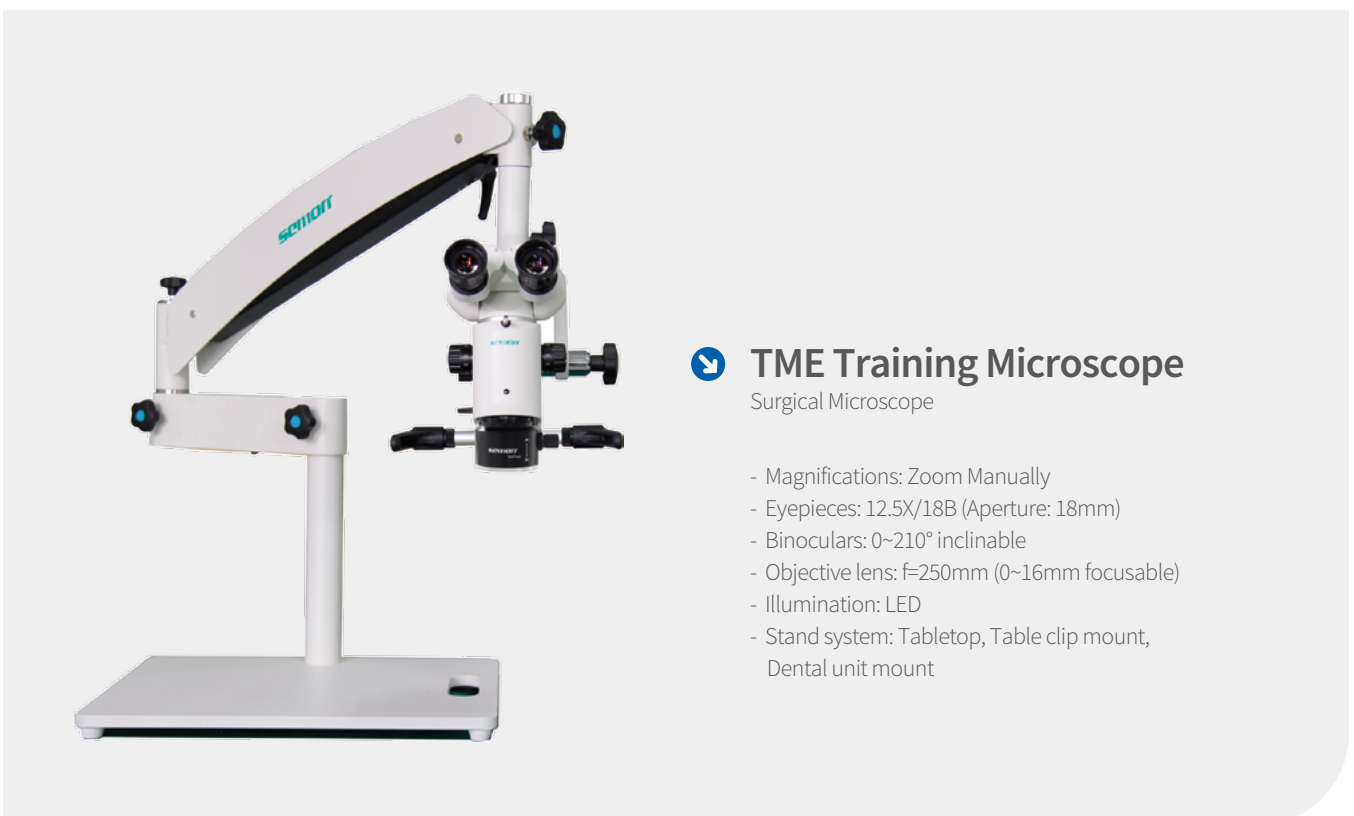
Easy position at any angle you prefer.



4

4 Pendulum Structure

The binoculars will remain the same height level to the floor during rotation movement. This design enables the surgeon to hold his or her head and back in a comfortable position and relieve the long time surgery fatigue.



TME Training Microscope

Surgical Microscope

- Magnifications: Zoom Manually
- Eyepieces: 12.5X/18B (Aperture: 18mm)
- Binoculars: 0~210° inclinable
- Objective lens: f=250mm (0~16mm focusable)
- Illumination: LED
- Stand system: Tabletop, Table clip mount, Dental unit mount

ENDO

ORTHO

ENDO DEVICES

LOUPES

MICROSCOPE

CBCT

DENTAL CHAIR

DENTAL CYCLE

IMPLANT

ACADEMY



Introduction

Founded in 2009, Bondent is a platform company that provides integrated products and services to dental clinics and stomatology hospitals worldwide. In the past decade, we have strived to develop and manufacture high quality products, conduct advanced professional educations, and offer complete customer services to doctors and nurses in the field.

In Q3 2018, Bondent formed a strategic alliance with the Chicago based XPI Co. to proudly present the state of art Bondream® 3D-1020 dental CBCT. With its superior image quality and metal artifact reduction capability, Bondream® 3D-1020 wowed the users in many markets.

Developed by
XPI intelligent
medical imaging
laboratory in
Chicago, IL, USA



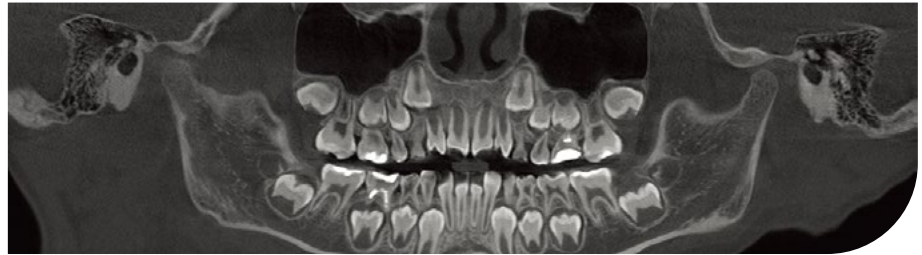
INTELLIGENT 3D CT PANORAMA

Bondent CBCT: AI-Based Quasi-Spectrum Metal Artifact Correction.

🔍 Bondent CBCT consists of a series of models with FOV 18*10 cm, 16*8 cm.

Core technologies:

- AI-Based Quasi-Spectrum Metal Artifact Correction
- Low-Dose CT with AI Enhanced Signal-to-Noise Ratio
- Intelligent 3D Pano
- Ceph AI Automatic Tracing Point



Intelligent 3D pano



Better image



Professional Software



Bondent 1020S

3 in 1 CBCT

CT - Panoramic - Cephalometric

- 1 Intelligent anti-artifact technology provides a clearer and accurate digitisation and decreases chances of misdiagnosis;
- 2 Low-dose, intelligent noise reduction technology, ultimate image clarity
- 3 Intelligent 3D panoramic technology, breaking the traditional limitations, 33 CT, panoramic pictures are generated at one time
- 4 Multi-track focusing panoramic technology, focusing on clinical pain points
- 5 Powerful and professional on-demand 3D processing software enables easy communication between doctors and patients
- 6 24/7 available service with free software upgrade.



Leading technology originated from the US XPI Intelligent Medical Imaging Research and Development Laboratory. The core team is the medical imaging doctoral group of the University of Chicago led by Professor Pan Xiaochuan.

1 Reduce Artifacts



Normal

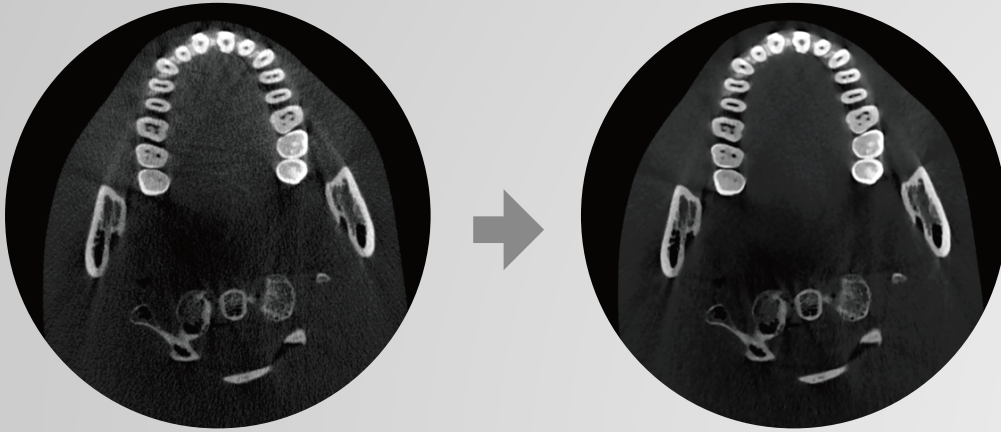


Bondent

Notes: During CBCT reconstruction, high density materials such as bone tissue and metal will produce artifacts, too many artifacts can affect the authenticity of the image illustration, digital applications such as digital implant guides.

2 Intelligent Noise Reduction

Committed to resolve the intrinsic deficiency of traditional panoramic film: distortion, overlap.

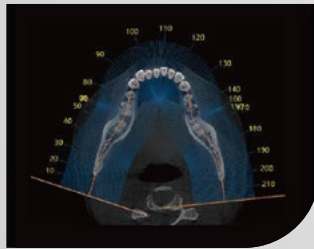


4 Theory of Onion

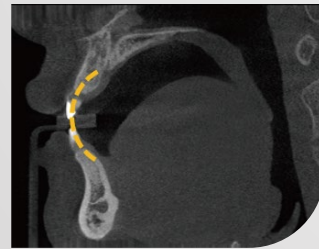
XPI's proprietary AI algorithm not only recognizes maxillary, mandible and dental arch, but also sketches the biological curvature of teeth automatically.



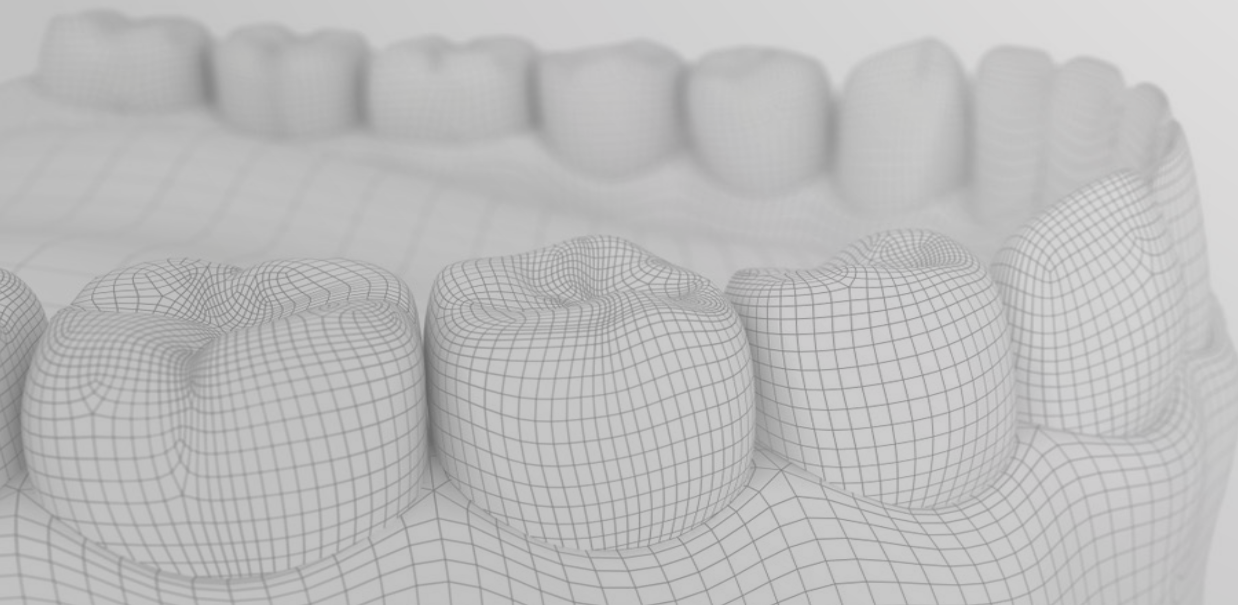
Theory of Onion



Dental Arch



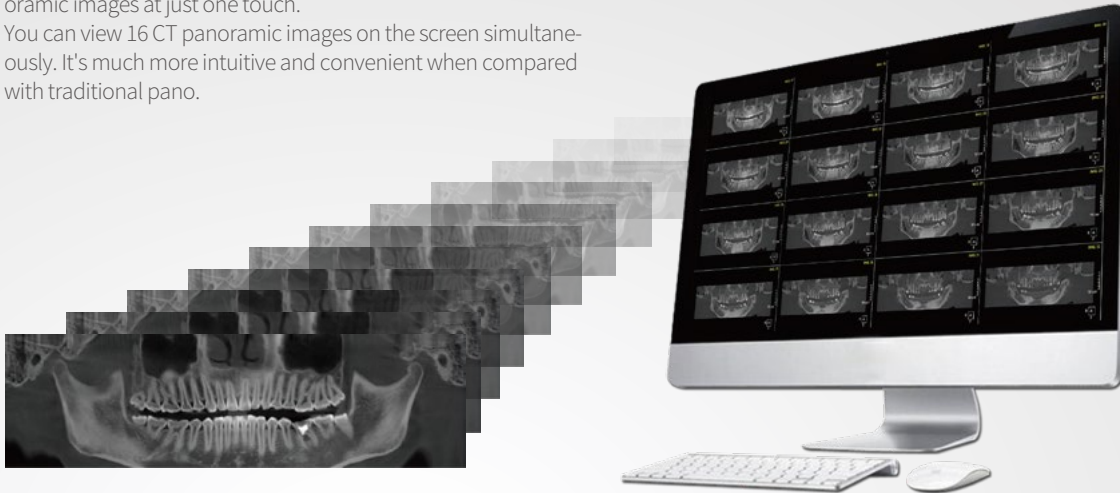
Biological Curvature Of Teeth



3 Intelligent 3D Pano

Based on the shape of each patient's maxillary and mandible, the system automatically generates 33 slices of 0.8mm thick CT-panoramic images at just one touch.

You can view 16 CT panoramic images on the screen simultaneously. It's much more intuitive and convenient when compared with traditional pano.



5 OnDemand 3D Dental

- DICOM digital solutions
- Bone and bone mass measurements in the implanting area
- Review wisdom teeth and important anatomical structures
- Restoration oriented implanting simulation
- More accurate MPR tomography in clinical diagnosis
- Better communication with patients



6 High Quality Service

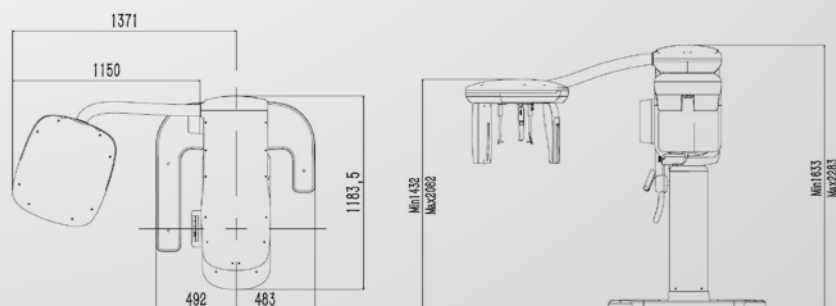
24/7
available
service

free
software
upgrade



Technical Data

Technical Overview	Bondent1020S	Bondent 1020S (mini)	Bondent1020E
Outlook			
Field of View	16cm x 8cm	12cm x 8cm	16cm x 8cm
Camera Mode	CT, Pano, Ceph	CT, Pano, Ceph	CT, Pano
Sensor Type	CT, Pano (CMOS), Ceph (CCD)	CT, Pano (CMOS), Ceph (CCD)	CT, Pano (CMOS)
Detector Switching Mode	Automatic	Automatic	/
Patient Positioning	Standing/Seated/WheelchairAccessbile	Standing/Seated/WheelchairAccessbile	Standing/Seated/Wheelchair
Installation	Upright	Upright	Upright
Pixel Value	70um,100um,150um, 200um,250um,300um	70um,100um,150um, 200um,250um,300um	70um,100um,150um, 200um,250um,300um
Spatial Resolution	>1.8lp/mm (CT and Panoramic mode) >2.0lp/mm (Cephlo Mode)	>1.8lp/mm (CT and Panoramic mode) >2.0lp/mm (Cephlo Mode)	>1.8lp/mm (CT and Panoramic mode) >2.0lp/mm (Cephlo Mode)
Gray Scale	Mbit	Mbit	Mbit
Reconstruction Time	Less than 60s	Less than 60s	Less than 60s
Focal spot	0.5mm	0.5mm	0.5mm
Exposure Time	CT: 8s or 24s; Pano: Ms; Ceph: 4.2s or 8.4s	CT: 8s or 24s; Pano: Ms; Ceph: 4.2s or 8.4s	CT: 8s or 24s; Pano: Ms;
Workstation PC	Model: Hpworkstation Graphics card: GTX1660 (6G only) Monitor: HP 23.8", 1920x1080 resolution Operation System: Windows 10 64 Workstations ASIA CPU: i5 Memory: 16GB DDR42 666 DIMM ECC Registered Memory Hard Disk: 1TB7200RPM SATA3.5in, 256G SSD Drive: 9.5mm DVD-Writer 1st ODD Keyboard: Business Slim PS/2 Wired Keyboard PRC Mouse: HP Optical USB Mouse	Model: Hpworkstation Graphics card: GTX1660 (6G only) Monitor: HP 23.8", 1920x1080 resolution Operation System: Windows 10 64 Workstations ASIA CPU: i5 Memory: 16GB DDR42 666 DIMM ECC Registered Memory Hard Disk: 1TB7200RPM SATA3.5in, 256G SSD Drive: 9.5mm DVD-Writer 1st ODD Keyboard: Business Slim PS/2 Wired Keyboard PRC Mouse: HP Optical USB Mouse	Model: Hpworkstation Graphics card: GTX1660 (6G only) Monitor: HP 23.8", 1920x1080 resolution Operation System: Windows 10 64 Workstations ASIA CPU: i5 Memory: 16GB DDR4 2666 DIMM ECC Registered Memory Hard Disk: 1TB7200RPM SATA3.5in, 256G SSD Drive: 9.5mm DVD-Writer 1st ODD Keyboard: Business Slim PS/2 Wired Keyboard PRC Mouse: HP Optical USB Mouse
Operational Software	Bon-Masterimage management module; Bon-Capturepatientscanningmodule; Bon-Touch touchscreen module; OnDemand3D™ 3D post-processing module	Bon-Masterimage management module; Bon-Capturepatientscanningmodule; Bon-Touch touchscreen module; OnDemand3D™ 3D post-processing module	Bon-Masterimage management module; Bon-Capturepatientscanningmodule; Bon-Touch touchscreen module; OnDemand3D™ 3D post-processing module



ENDO

ORTHO

ENDO DEVICES

LOUPES

MICROSCOPE

CBCT

DENTAL CHAIR

DENTAL CYCLE

IMPLANT

ACADEMY



Introduction

📍 Based in china dental valley, Sichuan Bondent Dental Equipment Co., Ltd is a high-tech enterprise dedicated to the research, development, manufacture and sales of dental equipment, belonging to shanghai bondent group.

Bondent owns E classic series and S high-end series, which makes dental consultation convenient and comfortable.

Specialty
casting quality.
Details show-
ing stylish.

A close-up photograph of a dental chair's seat and backrest. The upholstery is a deep red color with a smooth, leather-like texture. The chair is shown in a reclined position, with the backrest tilted upwards. The metal frame is a light grey color. The background is a plain, light grey gradient.

BONDENT DENTAL CHAIRS

Bondent Dental Chairs: A Good Communication Environment

👉 **Doctors Oriented-**The handy operation of the unit creates a comfortable workplace for treatment.



👉 **E-200**
Integrated Dental Unit

Dual master control system

Two separated control panels located at doctors and assistants' position to ensure seamless cooperation between the operators.

LED surgical lighting

Professional surgical lighting with only 6-7mm shadow area, satisfies illumination in the field of view.

Ergonomic design

Ergonomic waist support provides a more stable and comfortable movement.



👉 **S-500**
Integrated Dental Unit

Simple

Dual touchpads with integrated programming simplifies chair operation to increase efficiency.

Smart

Chair movement is synchronized with natural motion of the patient through meticulously structured virtual pivot.

Stylish

Chic and ergonomic design provides ample legroom for dentists and operators.

UNPARALLELED QUALITY

S-500 Integrated Dental Unit

Doctors Oriented-The handy operation of the unit creates a comfortable workplace for treatment.

Dual master control with multiple functions.

Touch-type control panel with simple and visualized diagrams. Chair with 9-position memory program (3 groups of 3-position memory program.; mouth-rinsing position x 1; emergency position x 1; reset of chair position x 1)

Constant-temperature water for mouth rinsing; Display of water temperature; Setting of bowl-rinsing time and mouth-rinsing time;

Display of failure alarm; The control system has failures self-checking function when the unit is turned on. When a failure occurs, the system will sound the alarm, and the error code will be displayed on the control panel.

Linkage function for operation lamp, chair and bowl rinsing. Doctor's operation instructions are performed instantly, and thus work efficiency is improved.

Camera system can be installed on the LED operation lamp to provide for doctors high-definition image and high magnification for minimally invasive surgery.

Safety Guaranteed and Risk Avoided.

The pipeline disinfection system of strong and weak suction and delay control can effectively avoid cross infections.

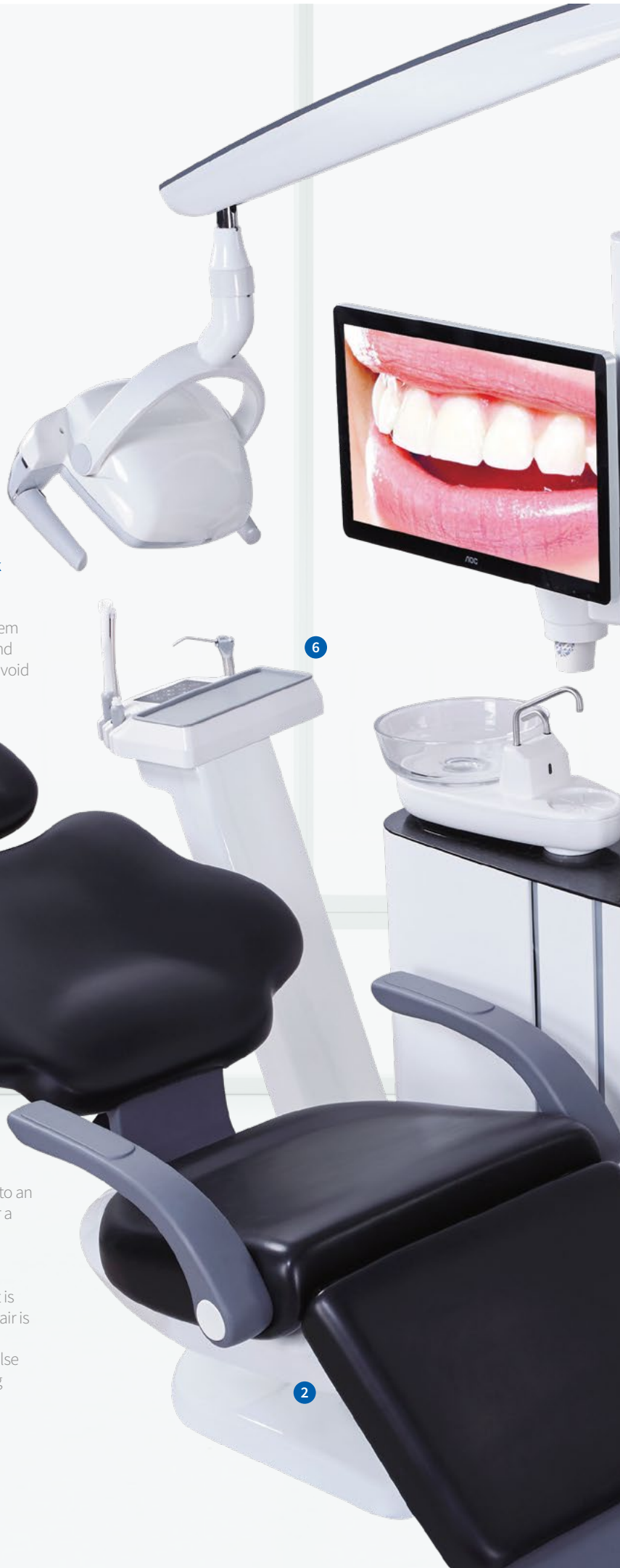
Sensitive safety protection device--When the unit runs into an obstacle, press any button for a rapid emergency shutdown.

Chair-Instrument interlock function-When an instrument is working, the motion of the chair is locked for the avoidance of accidental injury caused by false movement of the chair during treatment.

1

6

2



Innovative Ergonomic Design

1 The chair can move up and down within the range of 450-850mm, enabling doctors to work at their best posture.

Backrest with narrow upper part allows doctors to get close to patients.

2 The suspending chair creates enough legroom for doctors and assistants.

3 The airlock of the balance arm ensures accurate positioning of the instrument tray.

4 The instrument tray is highly flexible and stable.

Assistant Oriented-Create a caring work environment for assistants. Ample space for four handed dentistry.

5 Independent bottles for pure water and disinfectant water

The transparent door allows assistant to observe the water level of the water bottles, so as to know when to switch the source of water and adjust the pressure of the overall unit.

It facilitates the disinfection of the pipeline of the unit that can greatly lower the risks of cross infection and keep the unit in hygienic condition.

6 Short & Light weight pipes

The short and lightweight pipes for the strong & weak suction can reduce the discomfort caused by the suction force of the pipeline to both assistant and patients.

Assistant Instrument table

The large-sized table allows assistant to place more tools on it.

Assistant Control Panel

The assistant can easily help doctor control the status of the dental unit with the control panel.



The 2 in 1 paper towel and cup dispenser can reduce the workload of assistant.

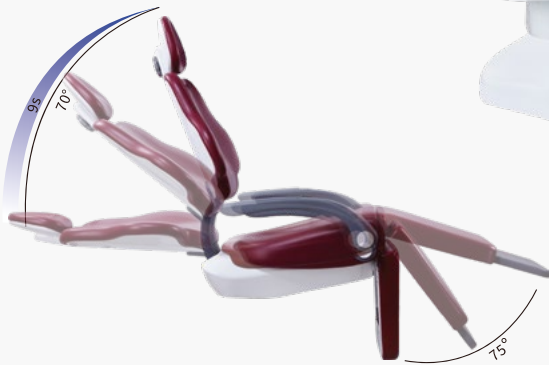


👉 S-500 Integrated Dental Unit

Patients Comfort

Composite Linkage Mechanism

The self-developed horizontal compensation and foot-lifting composite mechanism makes the pitching and lifting motion trajectory of the chair closer to the motion trajectory of the human hip joint, reducing the feeling of back rubbing caused by the inconsistent motion trajectory of the seat and the human body and enhancing patient's experience during treatment.



1 Ergonomic Chair Design

The chair designed based on human body data is in line with the human body curve. The convex waist design can bring a stronger lumbar support to the patient, providing a comfortable experience for to the patient.

1



2

2 Folding Leg Cushion

The ultra-low chair position with folding leg cushion and an initial height of only 450mm is convenient for patients to get on and off the chair, especially for the elderly, children and physically challenged people.

Stretchable double-joint headrest



A Good Communication Environment

Doctor-patient communication

The chair that can rotate by 90 degrees creates a good communication environment for doctors and patients, which helps build up mutual trust. Face-to-face communication can reduce the tension of patients.



Humanized lighting design improves efficiency.

The three-axis rotatable LED operation lamp can be accurately located at any angle and position and provide a good lighting effect for the treatment area. The flexible mobile lamp head is convenient for doctors to operate, and the light can reach any position and angle the doctor need.

Rectangle light spots evenly distributed; Good shadowless effect with neat edges.

Digital display; Camera system can be installed on it to realize remote diagnosis and treatment and digital teaching.

Illumination Adjustment
Range:7000-120000LX

Color Temperature Adjustment
Range: 4000-5500K

Safety Ensured by Disinfection&Infection Control

Infection Prevention and Control from the Outside of the Unit

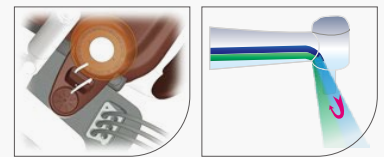
The smooth and uniform outer surface is easy for cleaning, which effectively guarantees the control of external infections. Surface materials and coatings are corrosion-resistant and wear-resistant. It is easy for cleaning and disinfecting the surface of the product.

One-button operation. The disinfection process is completely automated

The waterway disinfection of all the instruments on the instrument rack is ensured. There's light indicator during disinfection.

Anti-drawback System

The anti-drawback system prevent the handpiece from internal contamination, which can help protect patients from cross infection.



Technical parameter

Power Voltage	220±10 V
Supply Frequency	50 Hz
Water Inlet Pressure	200-400 Kpa
Air Inlet Pressure	500-700 Kpa
Air Flow	≥50L/min
Weight	200 Kg

3 Disinfection System for Strong & Weak Suction (Optional)

The strong and weak suction can be turned off with a delay of 5 seconds to ensure that the saliva in the pipes is completely drained away, which helps effectively prevent cross-infection. During the suction process, the non-corrosive disinfectant solution will effectively disinfect and sterilize the suction pipes.

4 Suction System for Spittoon (Optional)

The water-level sensing suction system can solve the problem of poor drainage of water of spittoon.

5 Disinfectant water System (Optional)

The disinfectant water system provides sterile water source for dental treatment and avoids wound infection.



PRAISE FOR SIMPLICITY

👉 E-200 Integrated Dental Unit

Customer-oriented

Comfortable treatment environment

Ultra-thin cushion and upper narrow design enable the doctor to get close to the patient and obtain a more comfortable working position.

Application of space geometry, combined with compact sidepod, instrument tray; E200 has a better sense of space, providing doctors and assistants with good FOV and operating space.

Safer and more convenient operation

The arm is easy to operate, you can pull it to the specified location gently and stop stably.

Reliable light sensing touch button, multi-key composite linkage, dual-master control design and four-point design make the operation easy. Super-short strong and weak straw design makes the assistant operation easier and more convenient.

External super-large filter design to ensure suction more efficiently and easy to maintain and clean.

Comfortable visiting experience

Ergonomic chair allows patients to get effective support at the waist.

High cushion pivot point and rotation design: it is closer to the point of rotation of the hip joint, reducing the discomfort caused by the rotation of the cushion.

Thoughtful support environment

More space for assistants to help doctors with four-hand operation. Combined paper cup and paper towel design and the button of rinsing located above cuspidor make it convenient for patients to take by themselves, thus reduced the workload of the assistant.



Optimized structure design

1 Rotating handrail design

Easy for patients to get up and down.

2 Quick motor

With the imported DC super silent motor, the cushion can be reset at 9 seconds; Motor 5 years warranty, so that you can use it with safety.

3 Double joint head pillow

Suitable for different heights people; It can moved along with patient's head, which is convenient for observation and operation. The ergonomic design of the headrest can support your back neck, making the patient comfortable and relaxed.

4 Friendly man-machine interface

Dual master control four-point control; Inductive touch; Cuspidor-wash and rinse time can be adjusted;

The temperature of mouthwash can be adjusted; Three groups of 9 memory chairs position; the multi-functional linkage of light, chair, cuspidor; Interlock between handpieces and chairs.

5 Rotating cuspidor

150° rotating, it can be rotated to the appropriate location for the patient to spit; Easy to disassemble, can be 360° disinfection; Independent button is convenient for patients to gargle and rinse; Transparent glass cuspidor with high temperature coating is exceptionally hard and smooth, wearability and scratch resistance.

6 Salivary filter

located on the side of the assistant shelf, convenient to change and clean; The strong and weak straws from the side of the assistant shelf make them shorter, reduce discomfort to nurses and patients due to straw gravity.

7 Polymer sidepod

Sidepod design is compact and simple, make full use of the clinical room; It's durable and never fades.

8 Patent design paper towel box

Rotate flexibly, and it is convenient and smooth to take the last piece of paper towel without affecting the work of doctors and assistants; Flat upper cover design can place small items.

9 Double joint assistant rack

The large rotation range and small sidepod left enough operating space for the nurse to the four-hand operation; Flexible in rotation, easy for nurses to locate.



ENDO

ORTHO

ENDO DEVICES

LOUPES

MICROSCOPE

CBCT

DENTAL CHAIR

DENTAL CYCLE

IMPLANT

ACADEMY



🔽 E-200

Integrated Dental Unit

PERSONALIZED DESIGN

Specifications

Method of transportation	Hanging
Voltage	100VAC, 115VAC, 220-240VAC
Supply frequency	50/60Hz
Inlet water pressure	200-400Kpa
Inlet air pressure	550-800Kpa
Weight	180 Kg
Mounting	Floor mounting
Color	White (RAL9016)



It can be equipped with a microscope for micro-treatment.



LED-AZS (E200B standard)

- The switch, color temperature and illumination can be controlled by touch;
- Illumination range: 7000-56000lx;
- Color temperature range: 4000-5500k(7 steps);
- Digital display of color temperature and illumination;
- The handle can be removed for disinfection;
- Camera system can be added;
- CRI(color rendering index) Ra>90.

Lighting Option



LED-ZZ02 (optional)

- The switch, color temperature and illumination can be controlled by touch;
- Illumination range: 10000-120000lx;
- Color temperature range: 4000-5500k(7 steps);
- Good shadowless lighting effect
- Digital display of color temperature and illumination;
- The handle can be removed for disinfection;
- Camera system can be added;
- CRI (color rendering index) Ra>90.



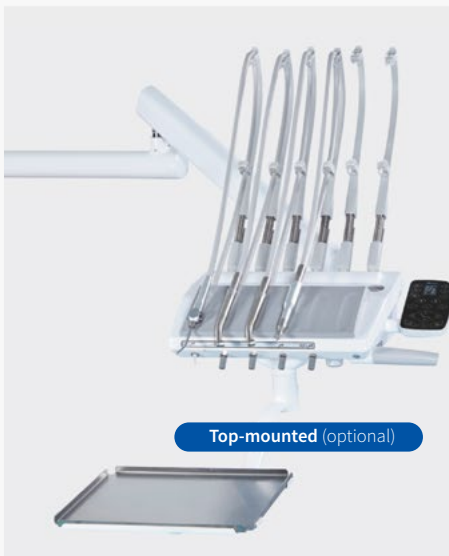
LED-FSM (optional)

- The switch, color temperature and illumination can be controlled by touch;
- Illumination range: 7000-32000lx;
- High color temperature (5500k), low color temperature (4000k);
- It has the function of blue light cutoff (prevent resin solidified);
- The handle can be removed for disinfection.
- Mental frame
- CRI (color rendering index) Ra>92.



LED-FSH (E200A/C standard)

- The switch, color temperature and illumination can be controlled by touch;
- Illumination range: 7000-32000lx;
- It has the function of blue light cutoff (prevent resin solidified);
- The handle can be removed for disinfection.



Top-mounted (optional)



Hanging (E200A standard)



Hanging (E200B standard)



Introduction

Dr. Clear Aligner Technology (Changzhou) Co., Ltd. is a subsidiary of Bondent Dental Group. The Bondent Dental Group is committed to providing "integrated services" to dental care institutions. From the introduction of foreign high level technology to domestic independent research and development and manufacturing, the Bondent is committed to creating a new and healthy oral health ecosystem through "industry - internet", to improve Chinese oral health technology and industrial level, to help dentists get achievement, to protect the oral health of 1.3 billion Chinese.

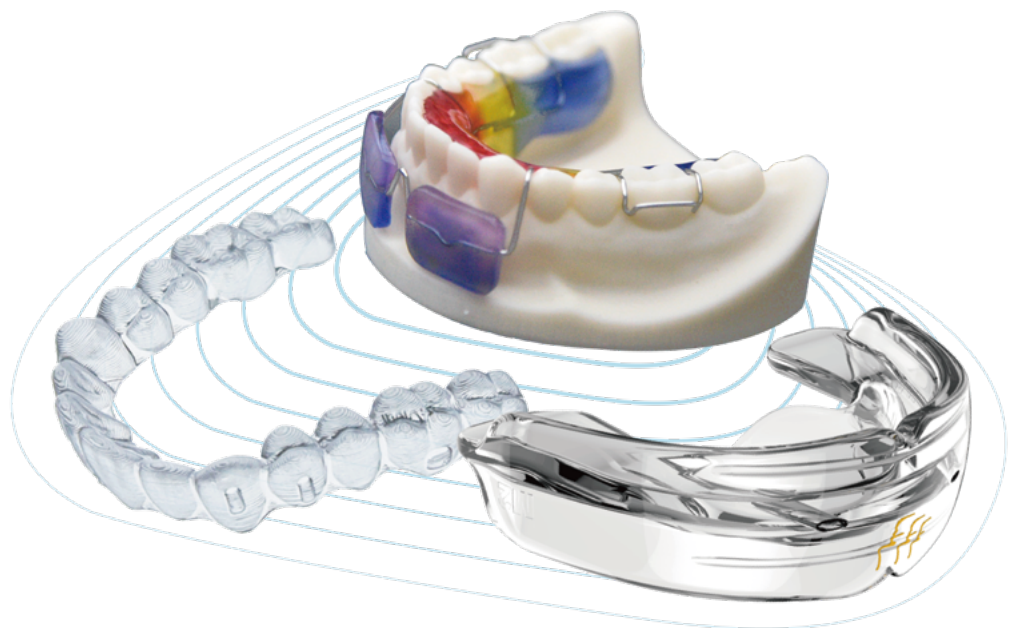
The headquarter of Dr. clear aligner 's located in Shanghai, which has a professional medical service center, software R&D center, customer service center and operation service center. Its production R&D center is located in changzhou west Taihu industrial science and technology Park, the market network is throughout the all over the country. Dr. clear Aligner is committed to providing high quality invisible correction solutions for global users, continuously improving users experience and creating a better smile for you.

 A close-up, artistic photograph of several clear aligner trays stacked together. The trays are highly reflective, showing complex, wavy patterns of light and shadow that create a sense of depth and precision. The background is a soft, out-of-focus grey.

THE
FUTURE
IS CLEAR

Dr.Clear Aligner Innovative Aligner and Service System

👁️ Full Dental Cycle Facial Management



What is the Full Dental Cycle Facial Management?

Full Dental Cycle Facial Management for children and teenagers includes early management of the Maxillofacial region and alignment of permanent teeth after completion of the teeth Eruption phase. Through assessment, we aim to combine functional treatment with invisible orthodontics, optimizing natural realignment forces with those that are artificially applied in a beneficial and specific method, to achieve the earliest correction of malocclusion.



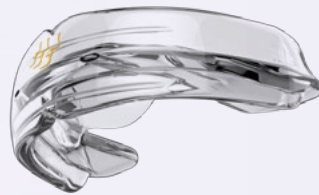
Dr. Clear Aligner · Optimized Single Diaphragm Edition

- Made with high quality diaphragm supplied by Bay Materials. (USA)
- Diaphragm possessed qualities of extended stress duration, and strong resistance toward tearing.
- Extremely resistant to color staining.
- Provide beneficial and specific correction force in every step of orthodontic treatment.
- Maintains high permeability throughout.
- Optimizes treatment through combining natural realignment forces with those that are artificially applied in a beneficial and specific method.
- Classic Single Diaphragm Invisible Aligner.
- Optional bite protector depending on treatment needs.

Dr.Clear Innovative Aligner and Service System

First, the natural orthodontic force is used to coordinate and balance the jaw, muscle and dentition relationship.

Then the precise orthodontic force is used to complete the innovative treatment method and concept of treatment.



Natural orthodontic force



Natural orthodontic force



1 Teeth channel

The active elastic anterior channel from 3-3 designed to align the front teeth on both arches.

2 Biteplate

The anterior biteplate designed to correct overbite, and the thicker biteplate on molar area induces the development of spee curve and allows a relief on condyles.

3 Lip pads

Four tear drop shaped pads reduce labial muscular interference increase saggital arches development and stimulate bone formation.

4 Air tubes

The two air tubes facilitate breathing and keep oral comfort.

5 Vestibular shield

Vestibular shield reduce labial and buccal muscular interference, increase arches development and induce proper tooth position.



Introduction

Along with the development of implant dentistry, we have realized the importance of implant positioning. The iEZguide Implant Guide System is designed by the R&D team led by Professor Hom-Lay Wang from the University of Michigan, USA.

This innovative continuous semi-circular Implant Surgical Guide System is compatible with most of the implant systems available on the market. It is the best choice for implant dentists considering its multiple advantages, such as simple operation, accurate positioning, good visibility, reduced mouth-opening requirement, easy-to-use feature, shortened operation time, and low cost.

An implant guide that can be completed by the dental chair in 30 minutes.

➤ iEZguide: Surgical guide system

- Dental drill DLC diamond super-hard coating
- Medical grade materials
- Not sterilized
- Sterilized at 134°C for 18 min



SIMPLE, SMOOTH
AND SAFE

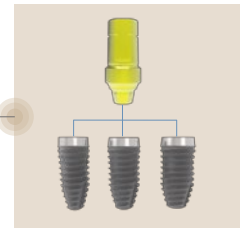
iEZ Dental Implant System

A simple, efficient solution for every indication.



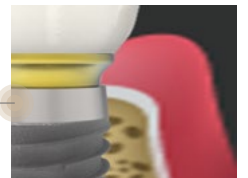
Single Connection

Reduce inventory levels Simple selection.



Platform Switching

Platform switching can help prevent crestal bone loss, increase the volume of soft tissue around the implant platform, helping to improve the esthetic end result.



Smooth Collar

To prevent peri implantitis.



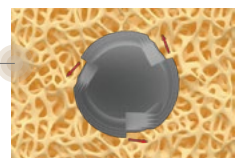
Double Tapered Thread

Secures early fixation even for and alveolar socket or parts with weak bone quality. Acquires higher primary stability through a wedge action even with an additional half turn.



Self Tapping Apex

To improve fixation for immediate to adding and placement.



ANT
SERIES



Bone Level Design, used on the Ant erior

POST
SERIES



Tissue Level Design, used on the Post erior

NARROW
SERIES



Bone Level Design, used on the Narrow anterior ridge

MINI
SERIES



Used on the Overdenture



CSI impression

Scanbody for Oral Scanner

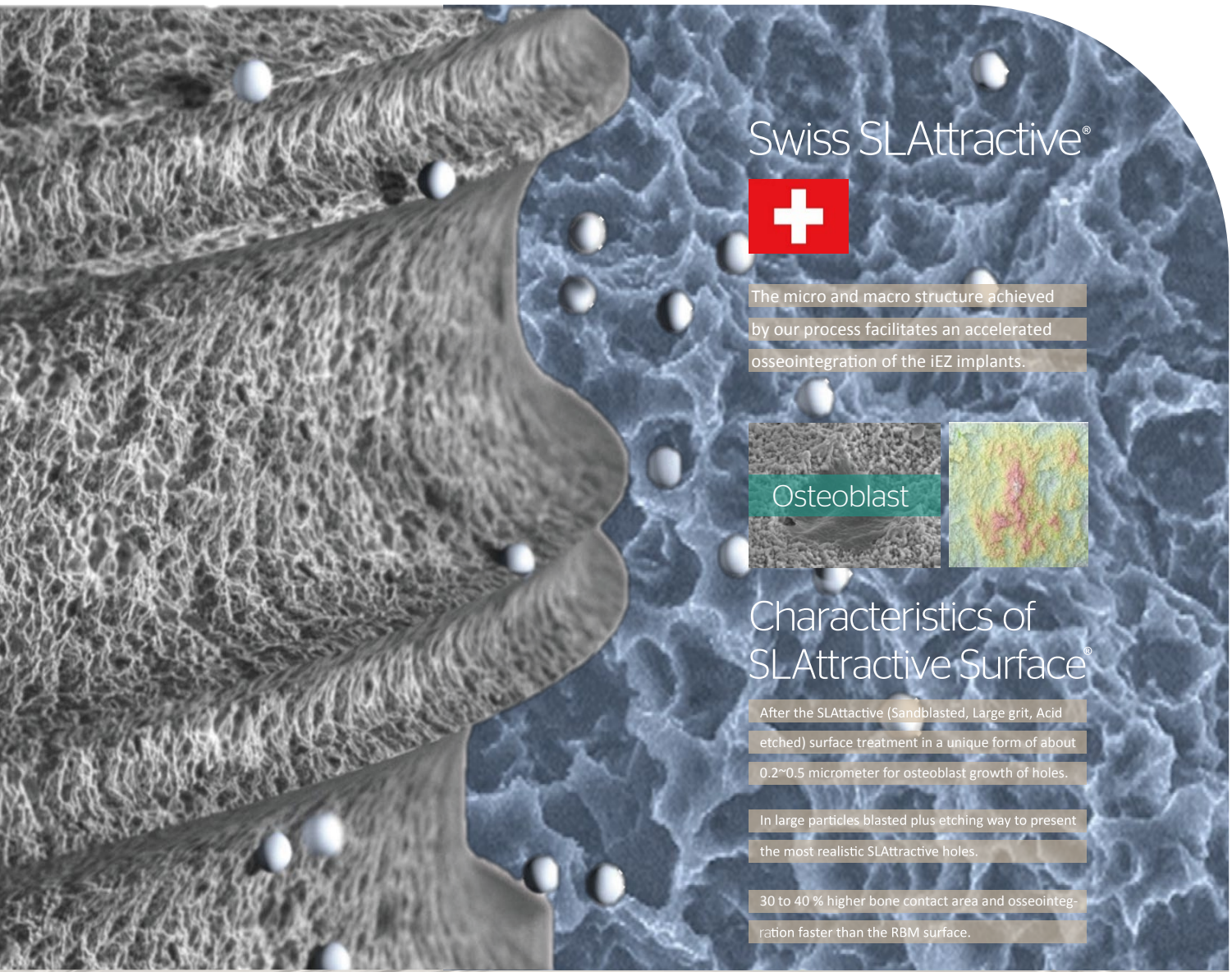
Cutting Groove

Impression Post

Esthetic Profile

Smooth Collar

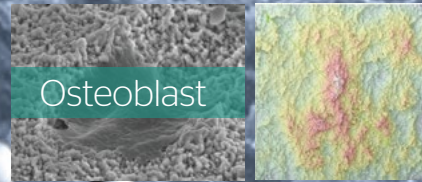
Patented Multifunctional Mount
Designed Not Only For Surgery But
also For Prosthesis



Swiss SLAttractive®



The micro and macro structure achieved by our process facilitates an accelerated osseointegration of the iEZ implants.



Characteristics of SLAttractive Surface®

After the SLAttractive (Sandblasted, Large grit, Acid etched) surface treatment in a unique form of about 0.2~0.5 micrometer for osteoblast growth of holes.

In large particles blasted plus etching way to present the most realistic SLAttractive holes.

30 to 40 % higher bone contact area and osseointegration faster than the RBM surface.

Grad 4 Pure Titanium PURCOLROLL®



iEZ implant are made of biocompatible medical Grade 4 Titanium. The specific Titanium used by iEZ was chosen due to its superior properties including high strength to weight ratio, very high corrosion resistance.



1,120 MPa 100% stronger than ASTM

Properties	Advantages
Tensile strength	1,120 MPa Extremely high strength / weight ratio
Elongation	17% Improved ductility and fracture toughness under static and dynamic loads
Oxygen content	0.4% maximum Direct structural and functional connection between bone and implant surface
Biocompatibility	Excellent

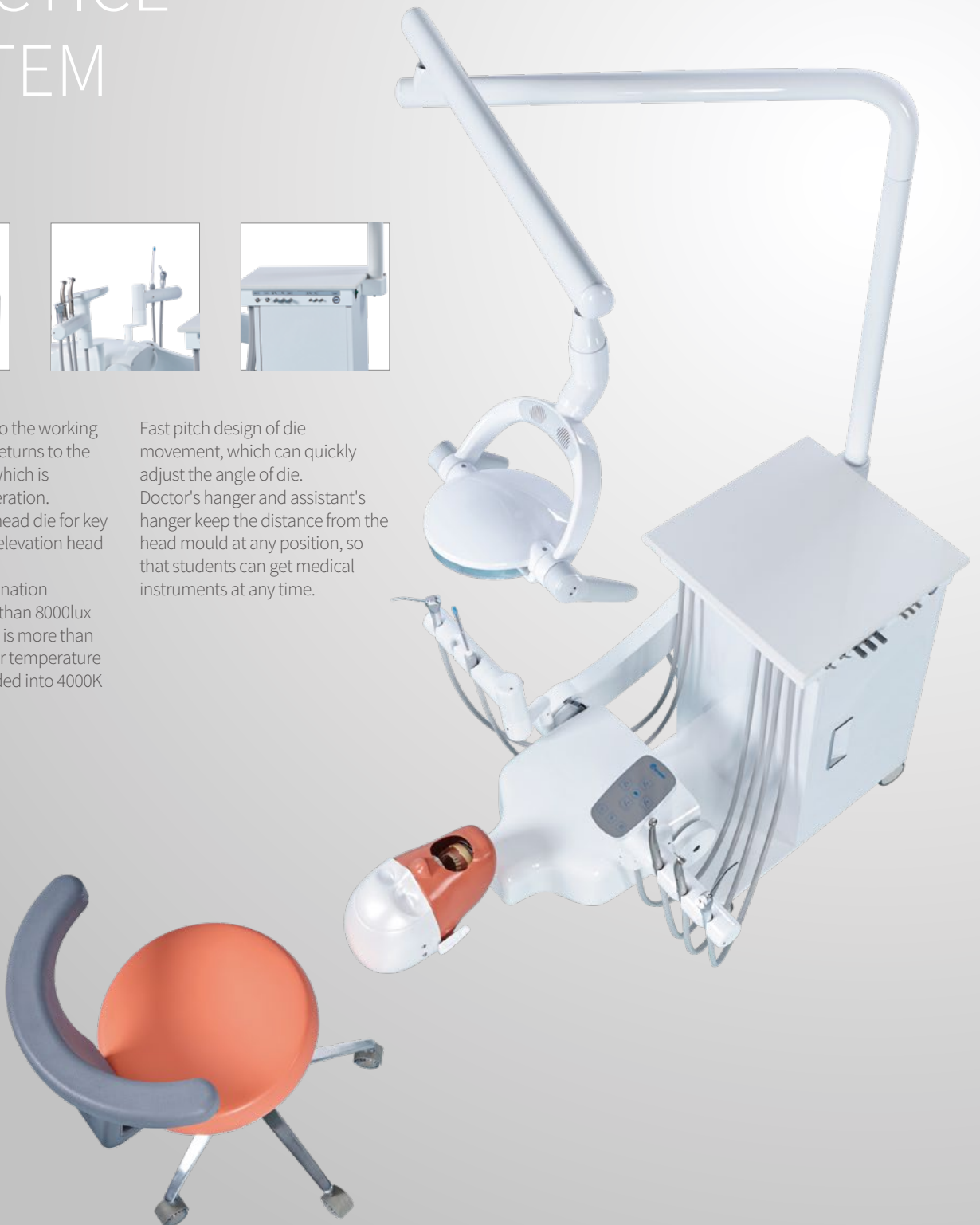
ENDO
ORTHO
ENDO DEVICES
LOUPES
MICROSCOPE
CBCT
DENTAL CHAIR
DENTAL CYCLE
IMPLANT
ACADEMY

DENTAL SIMULATION PRACTICE SYSTEM



One key expands to the working position, one key returns to the original position, which is convenient for operation. Electric elevation head die for key press and electric elevation head die for key press. The range of illumination adjustment is less than 8000lux and the maximum is more than 30000lux. The color temperature adjustment is divided into 4000K and 5500K.

Fast pitch design of die movement, which can quickly adjust the angle of die. Doctor's hanger and assistant's hanger keep the distance from the head mould at any position, so that students can get medical instruments at any time.



Dental Simulation Practice System

🕒 **Realistic and perfect equipment, practice and efficient learning.**

Dental Simulation Practice System is practice equipment, which used for dental school, universities and oral medicine specialized student before clinical practice teaching simulation. During this simulation environment, the students

can know and control clinical operation technology of oral courses as early as possible, also help them to get familiar with clinical teaching environment.

It can be equipped with a microscope for micro-treatment.



BONDENT ACADEMY

📍 Bondent Academy is a dental training platform specially built by bondent group. By providing practical and cutting-edge international technical and management training for dentists, it helps to promote the professional development of dentists.

Bondent Academy supports the international Continue Educations, University Grant Program and Global OPLs Network.



Invisible Orthodontics



Periodontal Implant



Micro Endodontic



General Laser



Manage Operations



Imaging Equipment



ENDO

ORTHO

ENDO DEVICES

LOUPES

MICROSCOPE

CBCT

DENTAL CHAIR

DENTAL CYCLE

IMPLANT

ACADEMY

